

Elevations

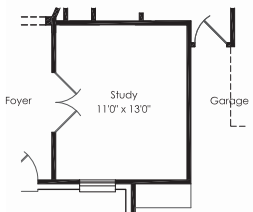


Elevation A

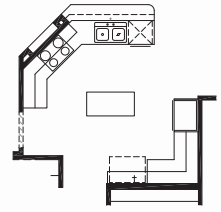


Elevation B

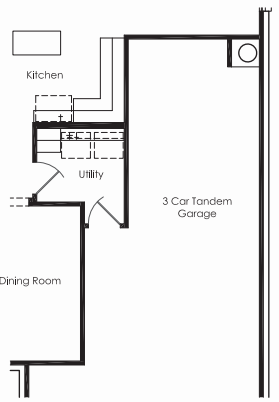
Options



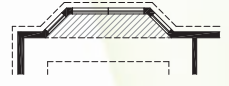
Optional Study



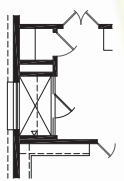
Optional Kitchen



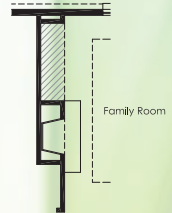
Optional Tandem 3 Car Garage



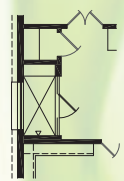
Master Suite Bay Window Option



Master Bath Option A



Optional Fireplace



Master Bath Option B

Prices subject to change without notice. Actual floorplan, elevation and square footage may not be exactly as shown. Builder reserves the right to make changes without notice. Rendering is artist concept only. E&OE.

the Eliot

from 2220 - 2597 sq ft



Elevation A shown

